



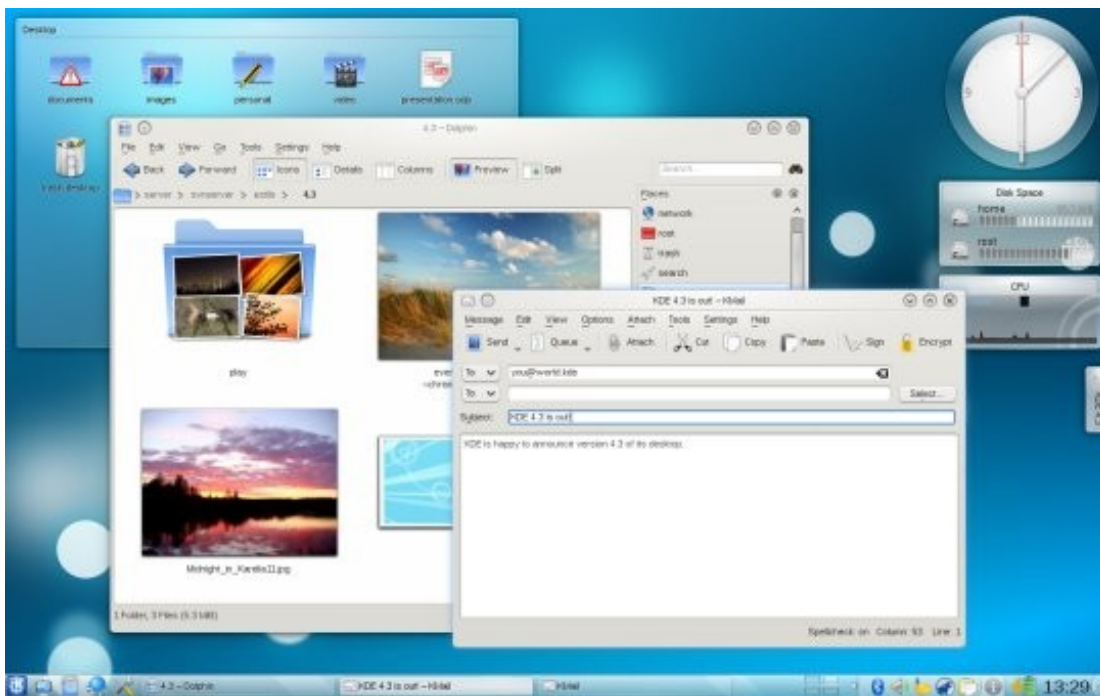
KDE 4.3 More Ultra Than A Desktop Environment

by
Roozbeh Shafiee

Visit me on : RoozbehOnline.Com / Roozbeh.us

KDE 4.3 Finally Released...

4 August, 2009. The [KDE Community](#) today announces the immediate availability of "*Caizen*", (a.k.a KDE 4.3), bringing many improvements to the user experience and development platform. KDE 4.3 continues to refine the unique features brought in previous releases while bringing new innovations. With the 4.2 release aimed at the majority of end users, KDE 4.3 offers a more stable and complete product for the home and small office.



The KDE community has **fixed over 10,000 bugs** and **implemented almost 2,000 feature requests** in the last 6 months. Close to 63,000 changes were checked in by a little under 700 contributors. Read on for an overview of the changes in the KDE 4.3 Desktop Workspace, Application Suites and the KDE 4.3 Development Platform.

Desktop Improves Performance And Usability

The KDE Desktop Workspace provides a powerful and complete desktop experience that features excellent integration with Linux and UNIX operating systems. The key components that make up the KDE Desktop Workspace include:

Plasma Theme :

The [Plasma Desktop Shell](#) introduces a new default theme, Air. Air looks much lighter and fits better with the default application theme. Plasma also has seen large performance improvements.

Memory usage has been reduced, and animations are smoother.

Activities can now be tied to virtual desktops, allowing users to have different widgets on each of their desktops.

Notification Management :

Plasma has improved upon its **job and notification management**. Running jobs are grouped in a single progress bar to prevent the popup of too many dialogs. Animations are used to signify that jobs are still running by smoothly sliding dialogs into the systemtray and animating the notification icon

Plasma Desktop Features :

Smaller changes in Plasma include **fully configurable keyboard shortcuts** and more extensive keyboard navigation, the ability to create a plasma widget when you drag or copy content on the desktop and many **new and improved Plasma widgets**.

The folderview widget now allows the user to **peek into a folder by hovering it** and the **new Translatoid widget** translates words and sentences right on your desktop using Google Translate. Furthermore, KRunner made its **plugin features easier to discover** by having a 'help' button showing the syntax of commands in the result area

File Manager :

The file manager Dolphin shows **small previews of files within a folder** and video thumbnails to help the user identify items

The **trash can now be configured** from the Dolphin Settings menu, and various configurable limitations on the trash size help make sure the disk does not fill up with deleted files.

Network Manager :

The new **network:/ location** shows other computers and services on the network (currently limited to those announced by DNS-SD/zeroconf protocols, more will be supported in future versions).

System Settings :

Further refinements to the workspace tools make it easier to work with your computer. A **faster SystemSettings** introduces an **optional treeview** for the configuration and several improvements to settingsdialogs.

New effects like 'Sheet' and "Slide Back" and **better performance** in **KWin** make window management more smooth, while integration with the Plasma themes creates a more consistent look.

KDE Utility Tools :

Klipper, a tool which keeps a history of things copied to the clipboard, can now **act intelligently on the content**. It automatically determines a list of applications which can handle a object copied to the clipboard and allows the user to start them right away.

The **KDE Utilities** have seen many improvements. Among other things, **KGpg**, the privacy tool used for encryption and signing files and emails **integrates Solid** for detecting the availability of a network connection and has improved its **key import dialog**.

Ark, a file compression and decompression application now **supports LZMA/XZ**, has improved support for zip, rar and 7zip and works better with drag'n'drop. **KDE Lirc**, a frontend for the **Linux Infrared Remote Control system (LIRC)**, has been ported to KDE 4 and is included again.

Okteta, the KDE hex editor gained a **checksum tool**, a filesystem browser sideview and a bookmarks sidebar.

Lokalize, the KDE translation tool, introduces support for scripts, new fileformats and the **translation of ODF documents**.

Personal Information Management :

The **KDE Personal Information Management** applications have seen improvements in various area's like performance and stability. Instant messenger **Kopete** introduces an improved contact list and **KOrganizer** can sync with **Google Calendar**. **Kmail** supports inserting inline images into email and the **Alarm notifier** gained export functionality, drag and drop and has an improved configuration.

KDE Bug Report Tool Redesigned :

In case something goes wrong with a KDE application and it crashes, the **new Bug Report Tool** will make it easier for the user to contribute to the stability of KDE. The bug report tool provides a three-star rating of the quality of the data it gathered on the crash. It also gives hints on how to improve the quality of the crash data and the bug report itself while guiding the user through the process of reporting. During the Beta cycles for this release the new bug report tool has already proven itself by the increased quality of bug reports.

Platform Accelerates Development

The KDE 4.3 Application Development Framework introduces the beginnings of [Social Desktop](#) integration, bringing the worldwide Free Software community to the desktop. Offering an open collaboration, sharing and communication platform, the Social Desktop initiative aims to allow people to share their knowledge without giving up control to an external organisation. The platform currently offers a DataEngine for plasma applets supporting aspects of Social Desktop.

The **new system tray protocol** developed in collaboration with the [Free Desktop initiative](#) is a long-overdue overhaul of the old systray specification. The old systemtray using small embedded windows did not allow for any kind of control by the systemtray over its contents, limiting the flexibility for the user and application developer at the same time. While the new systemtray supports both the old and new standard, application developers are encouraged to upgrade their applications to the new specifications.

The Plasma Desktop Shell introduces a **Geolocation DataEngine** using libgps and HostIP which allows plasmoids to easily respond to the location of the user. Other **new DataEngines** provide access to **Akonadi resources** (including mail and calendar), [Nepomuk](#) metadata and keyboard state besides the various improvements to existing DataEngines. Read about using and discovering DataEngines [on TechBase](#).

The KDE Application Development Framework introduces a **PolicyKit wrapper** making it easy for developers who want their application to perform privileged actions in a secure, consistent and easy way. Provided are an authorization manager and an authentication agent, and an easy library for developers to use. Read [here on TechBase](#) for a tutorial!

Akonadi, the Free Desktop PIM storage solution has been deemed **ready for more widespread usage**. Besides the availability of the DataEngine for plasma, application developers are encouraged to have a look at [the TechBase page](#) if their application needs access to or store chat logs, email, blogs, contacts, or any other kind of personal data. As a cross-desktop technology Akonadi can provide access to any kind of data and is designed to handle high volumes, thus allowing for a wide range of usecases.



Official Web Site

KDE.Org
forum.kde.org

KDE Persian Team

Home Page :

KDE-ir.Org
ir.KDE.Org

Supporting:

forum.kde-ir.org

wiki and learning:

wiki.kde-ir.org

IRC channel :

#kde-ir on freenode server

mailing list:

list@kde-ir.org